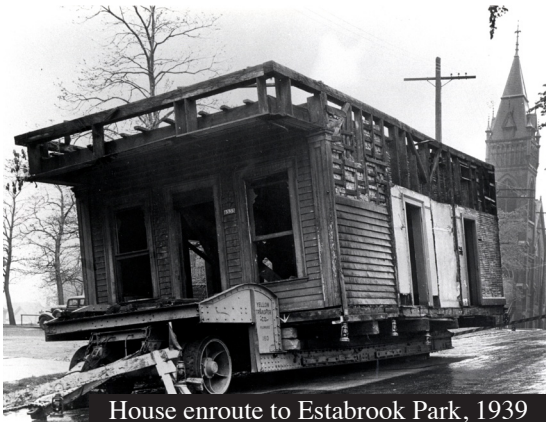


KILBOURNTOWN HOUSE

**The Oldest House
in Milwaukee
Needs a New Roof by Winter.**



House enroute to Estabrook Park, 1939

Sponsors of the Kilbourntown Roof Project are:

Milwaukee County Historical Society
Milwaukee County Parks Department
Colonial Dames of America
Friends of Estabrook Park
Shorewood Historical Society
Milwaukee Historic Preservation
Volunteers



Kilbourntown House, Estabrook Park

Will you help?

Fall, 2012

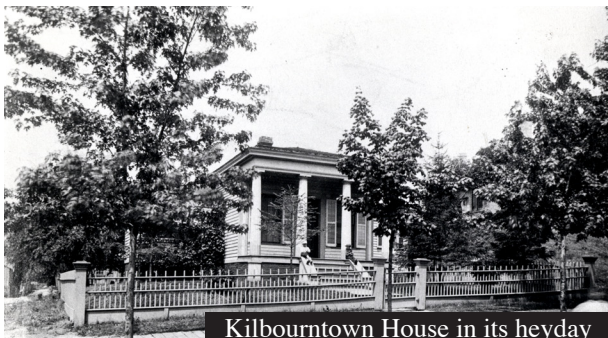
KILBOURNTOWN HOUSE HISTORY

Small, elegant “Kilbourntown House” in Shorewood’s Estabrook Park is the oldest documented house in Milwaukee.

It was built in 1844 by its carpenter-owner Benjamin Church in a Greek Revival style, epitomized by the four bold Doric columns on its front porch. For nearly 100 years it stood on North 4th Street between Cherry and Galena, a site originally opposite a tamarack swamp. Benjamin and Pernilia Church raised their six children in the house, which expanded as the family grew.

In 1939 Kilbourntown House was saved from demolition by the Milwaukee County Historical Society, the County Parks, the Colonial Dames of America’s local chapter, and the Works Progress Administration (WPA). It was trucked in four sections to Estabrook Park, where the WPA reassembled it.

Today it is a museum of 19th-Century domestic life and is listed on the National Register of Historic Places. It has wide plank floors, period furniture, and an insulating layer of bricks between its outer and inner walls. As its name indicates, it came from one of the three early towns-- Kilbourntown, Juneautown, and Walker’s Point-- which merged in 1846 to become the City of Milwaukee.



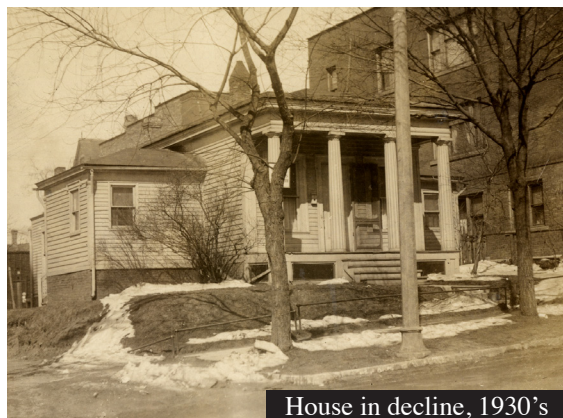
Kilbourntown House in its heyday

BECOME A KILBOURNTOWN “ROOFER”

Kilbourntown House
the oldest documented house in Milwaukee

The cedar-shingle roof of Kilbourntown House in Estabrook Park is deteriorating and will no longer give the house adequate protection--especially during the coming winter. Roofers to the rescue! Please join a group of individuals and organizations (see list on reverse) in a campaign to raise \$12,000 for a roof replacement.

This project can’t wait. Winter is coming. Please act quickly to help preserve one of Milwaukee’s greatest historical and architectural treasures. Your contribution will be gratefully received.



House in decline, 1930’s

Want to visit Kilbourntown House?

It will be open for viewing from
10:00 a.m. to 2:00 p.m.
on Saturday, October 27th, 2012.

Directions: Turn north from Capitol Drive onto Estabrook Drive in the park. Go 1/4 mile. Watch for the white-pillared house on the right.

DONATION FORM

YES, count me in as a Kilbourntown Roofer.
I want to put a new roof on a Milwaukee architectural treasure before winter sets in.

Name

Street Address

City, State and Zip Code

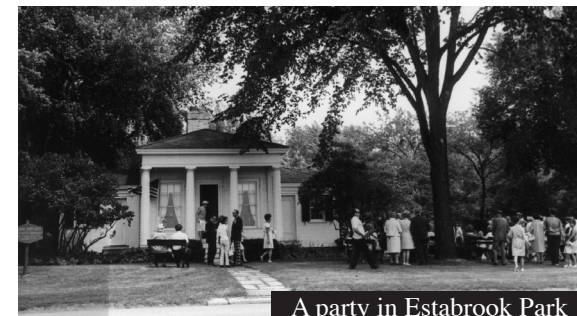
email address (optional)

DONATION

___\$25 ___\$ 50 ___\$100 ___\$200 ___ other

Make check payable to Milwaukee County Historical Society.
Earmark it “Kilbourntown.”

Mail to:
Milwaukee County Historical Society at
910 Old World Third Street
Milwaukee, WI 53203.
Checks only please.



A party in Estabrook Park

The Historical Society will send a letter of acknowledgement.
All gifts accepted with gratitude.
Have questions about the house project?
Call Scott Stroh, Executive Director of
the Milwaukee County Historical Society, at 273-8288.